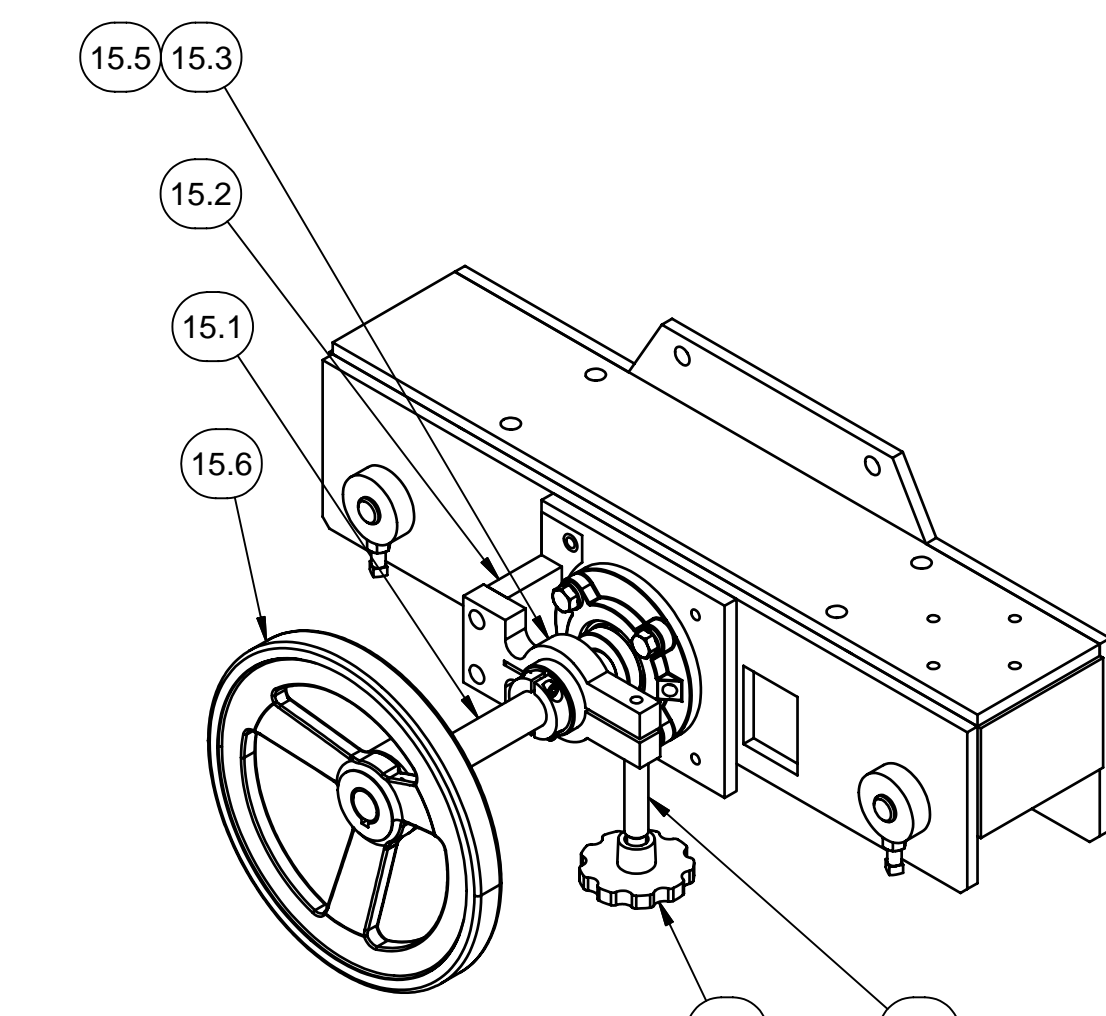
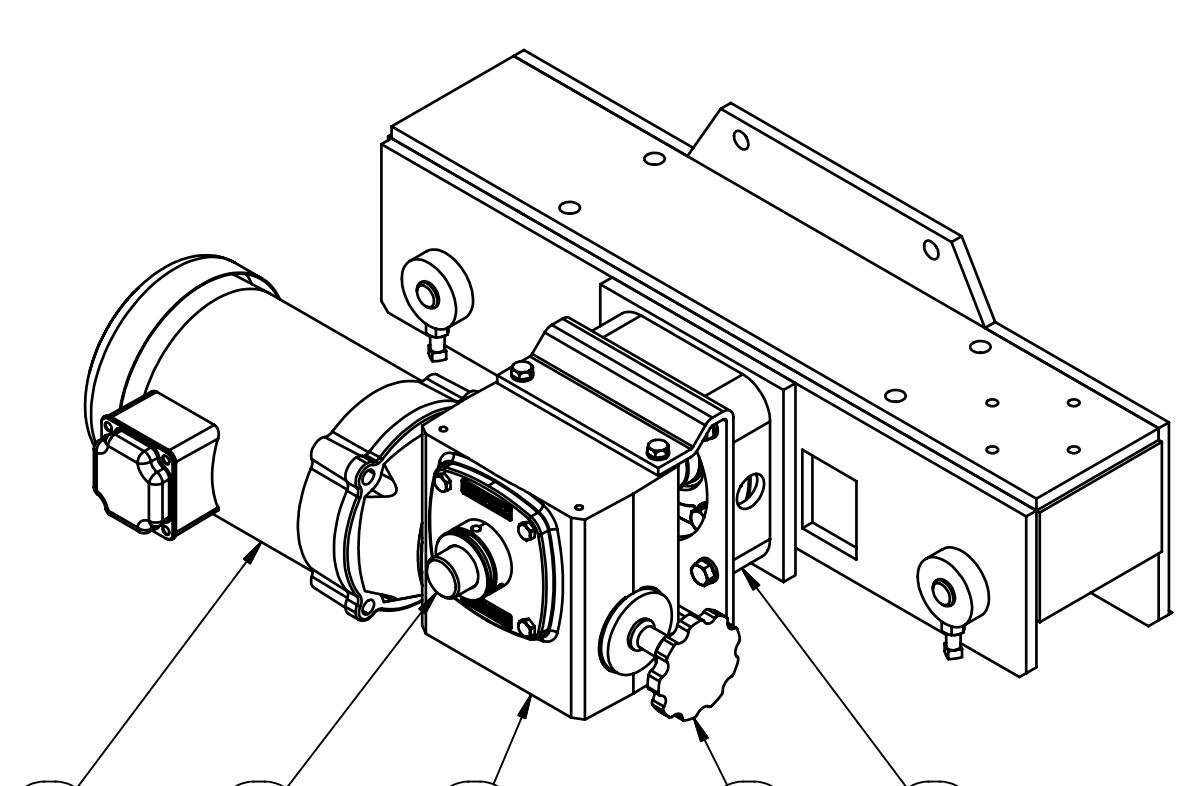


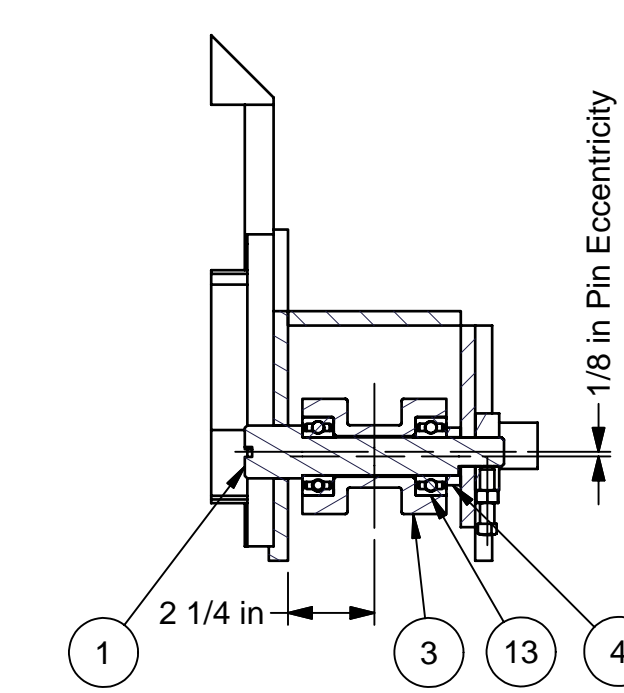
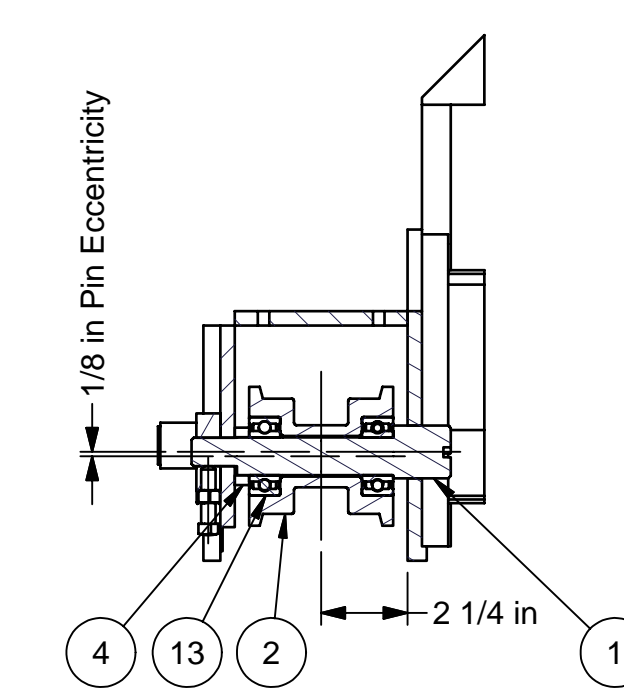
ENG NOTE:
 Item 17 Only Used if Machine is Equipped with Hydraulic Tilt Arbor.



MANUAL GANTRY (STANDARD)
 SCALE 1/5



POWER GANTRY (OPTIONAL)
 SCALE 1/5



ITEM	QTY	PART NUMBER	DESCRIPTION
17	1	B-4584-2	Bracket - Mounting - Hyd Power Unit - For Hyd Tilt Arbor
16.5	1	SR-5000-189	BostonGear HF721R-60-PS-B5-H-P19-T1 Reducer
16.4	1	SA-5000-251	82399841 Aluminum Knob, \varnothing 3-1/2"
16.3	1	EM-5000-059	Baldor VM3538 Motor
16.2	1	A-4592-2	Spacer - Gearbox - Tram Drive
16.1	1	A-4059-1B	Tram Shaft For Power Movement
16	1	Optional (Not Shown)	541 Power Gantry
15.8	1	A-4476-34	Base - Brake Mount - 541 Belt Drive
15.7	1	SA-5000-251	82399841 Aluminum Knob, \varnothing 3-1/2"
15.6	1	SA-5000-152	10" Alum. Handwheel Jergens 22103
15.5	1	A-4476-31	Clamping Bushing
15.4	1	A-4476-20	Shaft - Brake Handle - Model 515
15.3	1	A-4476-19A	Brake Clamp
15.2	1	A-4476-18	Mtg Bracket for Brake Clamp - Model 515
15.1	1	A-4059-1C	Tram Shaft - Manual Gantry
15	1	Standard (Shown)	541 Manual Gantry
14	2	MB-5000-185	Fafnir RFC 1 3/16 Piloted Flange Bearing
13	8	A-3900-059	Fafnir W205PP Radial Ball Bearing
12	2	E-4013-1E	Truck - End
11	1	B-4584-1	Bracket - Mounting - Enclosure
10	2	B-4506-16C2	Power Track Bracket - 541 Machine
9	1	B-4242-8D	Weldment - Tray - Power Track - Model 541
8	1	B-4026-2A	Bracket - Control Panel - Adjustable Position
7	1	B-4018-1B	541 Saw Rail Weldment - Large Crossover
6	2	A-4592-1	Machining - Gear - Tram - Model 541
5	1	A-4322-1	BAR - Tensioning - Saw Rail
4	4	A-4063-1	Spacer - Tram Roller
3	2	A-4061-2A	Roller - Tram - Flangeless
2	2	A-4061-2	Roller - Tram - 541/551 Machines
1	4	A-4060-1A	Pin - Tram Roller - 541

Parts List
SAWING SYSTEMS INC.
 P.O. Box 3754 • Knoxville, TN 37927-3754 • (865) 525-0600
 (800) 489-0601 • Telefax (865) 525-2320



TITLE: Model 541CA/CG/CS
Assembly - Tram Drive
 1 Required Per Machine

First Production Assembly: 541CG-05M85
 Assembly Replaces: E-4016-2C
 Last Production Assembly:
 Assembly Replaced By:

ZONE	REV	DESCRIPTION	DATE	APPROVED
BS	A	Removed Inward Tram Shaft Bearings (1103KRR x 2 Qty)	8/18/2005	NDL
ALL	B	General Revision, add Gearbox Spacer Revised to As Built With Two Separate Tram Shafts for Manual or Power Gantry & Added B-4026-2A Bracket - Control Panel - Adjustable	9/21/2005	DLL
ALL	C	Add A-4322-1 Tension Bar	5/31/2006	NDL
ALL	D		9/8/2006	DLL

RELEASED: _____ DATE: _____
 APPROVED: _____ DATE: _____
 PROJ. MGR: _____ DATE: _____
 MATERIAL: _____
 WEIGHT: _____

DIMENSIONS ARE IN INCHES AND DEGREES UNLESS OTHERWISE NOTED. DIMENSIONING AND TOLERANCES IN ACCORDANCE WITH ANSI Y14.5-1994

FRACTIONS DECIMALS ANGLES
 $\pm 1/16"$.X $\pm .050$ $\pm .06$
 .XX $\pm .010$
 .XXX $\pm .005$

BREAK AND DEBURR ALL SHARP EDGES
 TH RD ANGLE PROJECTION

TITLE: Model 541CA/CG/CS
Assembly - Tram Drive
 1 Required Per Machine

DRAWN: NDL SCALE: 1:8 DWG/PART NO:
 DATE: 12/6/2004 WEIGHT: E

SCALE	DWG/PART NO.	SIZE	SHEET
1:8	E-4016-2D	E	1 OF 1